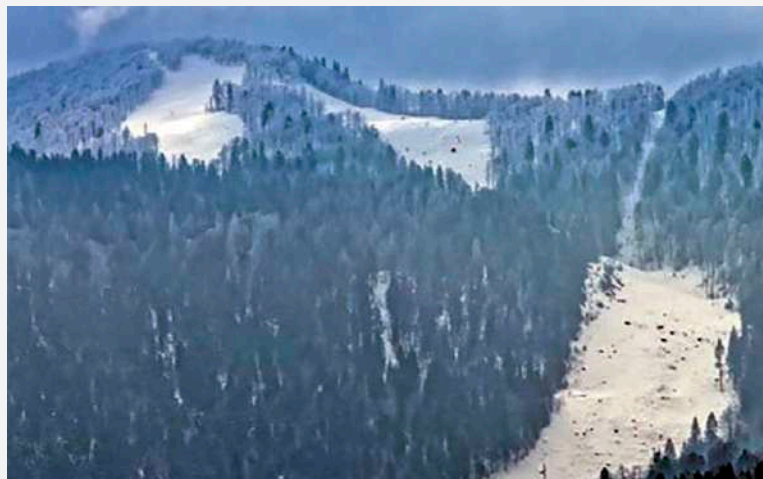




INVESTMENT PROJECT PROFILE



Project title	Bijela kosa Ski Centre in Vrbovsko
Location	City of Vrbovsko, village of Jablan, Gluhe Drage route
Project leader	Bijela kosa Ltd. Vrbovsko
Ownership	the Republic of Croatia and the City of Vrbovsko
Developed documents	Physical planning documents: • the project is in compliance with the physical planning documents Project documentation: • the main and final design Construction permits: • main design verification
Project description	<p>A modern centre with a complete array of winter and summer facilities allowing sustainable management of natural resources of the Vrbovsko area, with the aim to raise the quality of living and expand the range of tourist services and activities in Gorski Kotar. The Project covers the surface area of 186 ha and is situated at 1,300 m above sea level.</p> <p>Construction of two ski pistes in Phase 1 in the length of 2,200 m, and another three pistes in Phase 2, each 800 m long. The vertical transport of skiers will be provided with two 4-seater cable cars and two ski lifts, and the development of the artificial snow system has been planned with a water retention area and night skiing lights. A hotel with 40 rooms and 80 beds is planned to be built at the foot of the ski slope along with 10 bungalows, restaurants, service facilities and other facilities.</p>
Estimated value of the project	23.000.000 EUR
Realization model	Open negotiation options
For additional information about this project, please contact by e-mail: info@coral-consulting-service.com	